

NOTE- PERFORMANCE AS PER ISO 9906 GRADE-2B

PERFORMANCE CURVE OF ES 125-200 @2900 R.P.M

ES 125-200/X/403052



PUMPSENSE

ISO 2858

ES RANGE

MODEL ES 125-200

WORKING PRESS. 16 bar

SIZE 150x125-218

TEST PRESS. 24 bar

TYPE - END SUCTION BACK PULL OUT

SPEED 2900 rpm

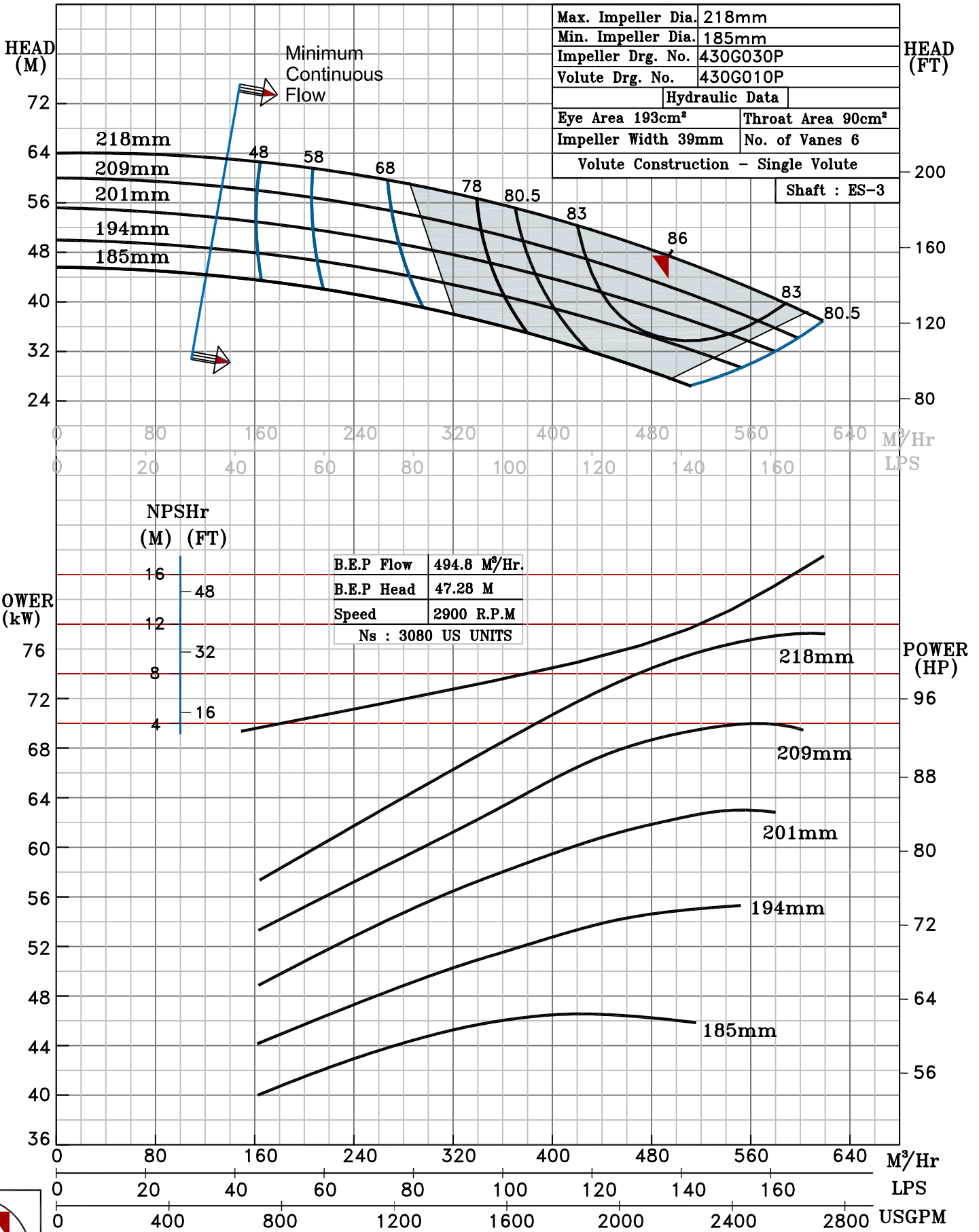
SHADED REGION ON THE H-Q CURVE REPRESENTS OPTIMUM SELECTION ZONE

PUMP PERFORMANCE CHARACTERISTICS COMPUTED BASED ON CLEAN COLD WATER S.G 1.0

Max. Impeller Dia.	218mm
Min. Impeller Dia.	185mm
Impeller Drg. No.	430G030P
Volute Drg. No.	430G010P

Hydraulic Data	
Eye Area 193cm <sup>2</sup>	Throat Area 90cm <sup>2</sup>
Impeller Width 39mm	No. of Vanes 6
Volute Construction - Single Volute	

Shaft : ES-3



2900 RPM